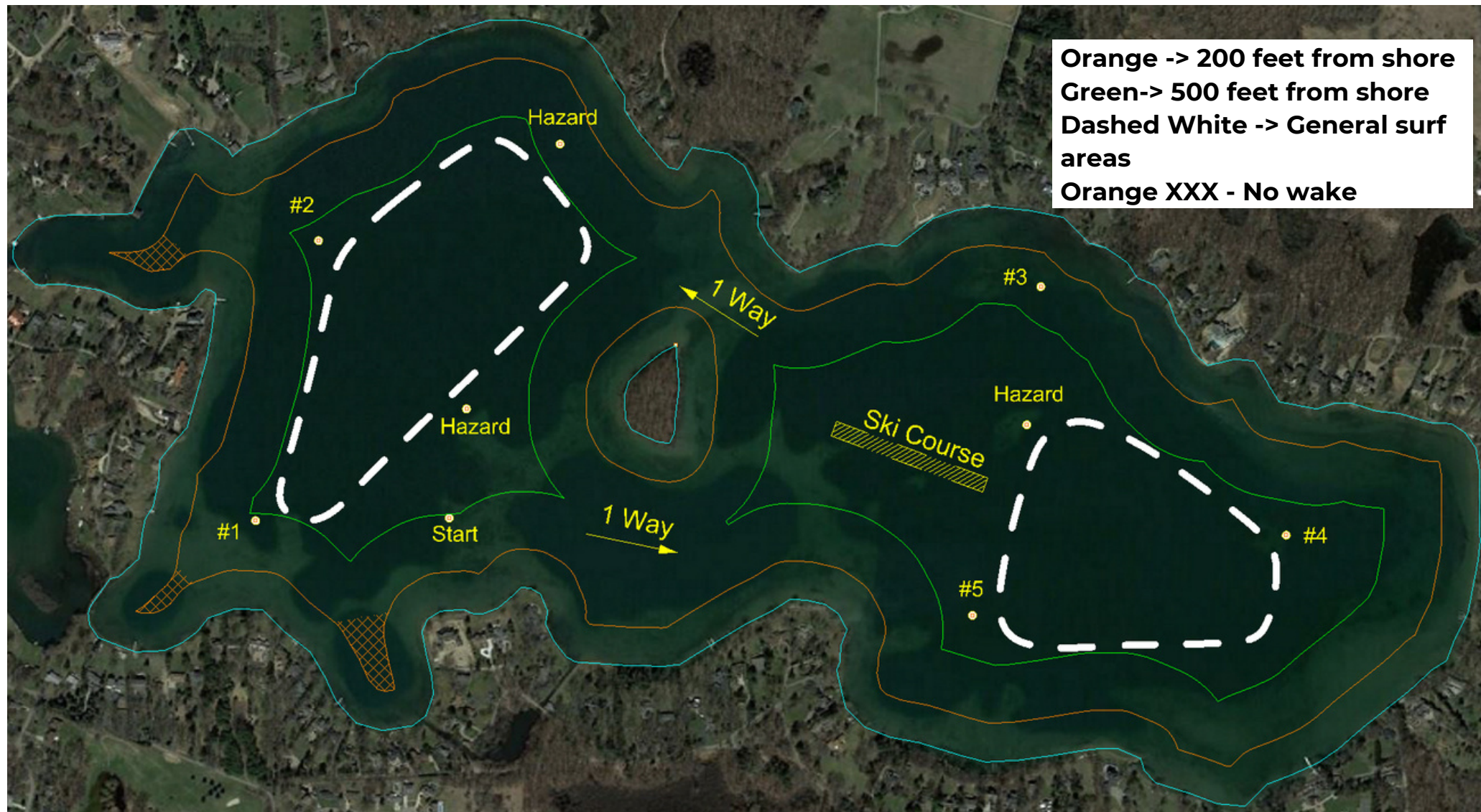


# LAKE ANGELUS SAIL, SURF & SKI COURSE MAP

- Buoys 1, 2, 3, 4, 5 & Start are all sailing / surf buoys
- Hazard buoys indicate shallow spots & the edge of surf lanes
- Bays are no wake
- Do not anchor or pull surfers/tubers/wakeboarders/etc., through the ski course balls.as it could damage your boat or the course

- While Travelling Fully Loaded:
  - Avoid the North channel between the island and shore as it is very shallow.
  - Stay inside of the buoys while fully loaded!





Please be mindful that the overall safety of those on the water is everyone's responsibility. Please do not attempt to use another boat's wake as a jump, cut too close to boats while under tow, and avoid parking in ski or surf lanes while they are in use.

## **Hours of Operation**

### **Memorial Day through Labor Day:**

No-wake speed before 9 a.m. and after 8 p.m.

### **Ski Course**

Skiers may use the slalom course after 7 a.m. on weekdays and after 8 a.m. on weekends, but must proceed to and from the slalom course at a slow, no-wake speed.

### **Labor Day through Memorial Day:**

No-wake speed before 9 a.m. and after 7 p.m.

## **No Wake 200 Feet From Shore**

No-wake speed 200 feet from any shore, dock, raft, marked or occupied swimming area, or any other vessel moored at anchor, except when water skiers are being picked up or dropped off with due regard for the safety of persons or property on an otherwise lawful manner.

## **Boats Operating in Wake Surfing Mode**

Boats operating in wake-surfing mode should operate at least 500 feet from docks or the shoreline, regardless of water depth, as recommended in the Michigan Department of Natural Resources Fisheries Report 37 (July 2023).

The City recommends that residents please use the current buoy configuration of markers approximately 500 feet from shore, which is maintained by the Lake Angelus Yacht Club, as target markers and surf lanes for all wake boat operators.

IN ORDER TO INSURE THAT ALL BOATERS HAVE PROPER SAFETY EQUIPMENT ON BOARD MICHIGAN LAW AUTHORIZES POLICE OFFICERS TO INSPECT BOATS FOR THAT PURPOSE. OUR OFFICERS WILL BE PERFORMING SAFETY INSPECTIONS PERIODICALLY THROUGHOUT THE SUMMER. IF YOU ARE STOPPED, PLEASE BE COURTEOUS AND COOPERATIVE, AS OUR OFFICERS ARE INSTRUCTED TO BE COURTEOUS, FAIR AND POLITE.